



## **EARLY RECOVERY AND REHABILITATION FOR CENTRAL MINDANAO (ERRCM) PROJECT**

# **INTEGRATED EARLY RECOVERY AND REHABILITATION PROJECT**

Barangay Gawang, Datu Saudi Ampatuan, Maguindanao  
October 2011 – November 2012

Implemented by

**MORO WOMEN DEVELOPMENT AND CULTURAL  
CENTER, INC. (MWDECC)**

# T ABLE OF CONTENTS

List of Acronyms	4
List of Figures	5
List of Annexes	6
<b>EXECUTIVE SUMMARY</b>	<b>7</b>
<b>I. BACKGROUND</b>	
<b>A. The Early Recovery and Rehabilitation Site</b>	
1. Barangay and Community Profile	11
2. Displacement History	12
<b>B. The Implementing/Responsible Partner</b>	12
<b>C. Project Implementation and Management</b>	
1. Selection of Beneficiaries	15
2. Actual Implementation of Project	16
3. Additional Resource Mobilization	17
4. Eliciting LGU Participation	18
5. Mainstreaming and Sustainability of Project Interventions	18
<b>II. OUTPUTS AND RESULTS</b>	
<b>A. Component 1</b>	
1. Core Shelter Units with Water and Sanitation Facilities	19
2. Shelter Repair Assistance	20
3. Installation of Level I and Level II Potable Water Systems	20
4. Provision of Food for Work	21
<b>B. Component 2</b>	
1. Construction of Barangay Health Station	22
2. Training on Primary Health Care and Reproductive Health	23
3. Establishment of Botika ng Barangay	23
4. Renovation of School Facility	24

5. Play Therapy Session for IDP Children	25
6. Trauma Counselling and Psychosocial Services for IDPs	26
<b>C. Component 3</b>	
1. Quick Impact Project (QIP) for Men	27
2. Quick Impact Project (QIP) for Women	28
3. Bio-Intensive Gardening (BIG)	29
<b>D. Component 5</b>	
1. Peace Constituency Activities (Support to Local Peacebuilding Initiatives)	30
2. Training on Culture of Peace (COP) and Conflict Management Integrating Gender Sensitivity	31
3. Dialogues and Meetings for Conflict Resolution and Peace Sanctuary Formation	32
4. Training and Coaching on Peace-based Community Organizing and Advocacy for Peace Core Group	33
<b>III. BENEFICIARY STORIES</b>	34
<b>IV. MAINSTREAMING AND SUSTAINABILITY</b>	35
<b>V. FINANCE</b>	36
<b>VI. RECOMMENDATIONS AND LESSONS LEARNED</b>	37
<b>VII. TURN-OVER CEREMONY</b>	38

## **Annexes**

# **L**IST OF ACRONYMS

<b>AFP</b>	Armed Forces of the Philippines
<b>ARMM</b>	Autonomous Region in Muslim Mindanao
<b>BAWASA</b>	Barangay Water and Sanitation Association
<b>BDA</b>	Bangsamoro Development Agency
<b>BFAR</b>	Bureau of Fisheries and Aquatic Resources
<b>BIG</b>	Bio-Intensive Gardening
<b>BLGU</b>	Barangay Local Government Unit
<b>CFSI</b>	Community and Family Services International
<b>DA</b>	Department of Agriculture
<b>DepED</b>	Department of Education
<b>DOLE</b>	Department of Labor and Employment
<b>ERRCM</b>	Early Recovery and Rehabilitation for Central Mindanao
<b>EU</b>	European Union
<b>EWER</b>	Early Warning and Early Response
<b>GPW</b>	Gawang Peace Watch
<b>IPHO</b>	Integrated Provincial Health Office
<b>MWDECC</b>	Moro Women Development and Cultural Center, Inc.
<b>MHO</b>	Municipal Health Office
<b>MILF</b>	Moro Islamic Liberation Front
<b>MINDA</b>	Mindanao Development Authority
<b>MOA-AD</b>	Memorandum of Agreement on Ancestral Domain
<b>MPDC</b>	Municipal Planning and Development Council
<b>NASA</b>	Neighbourhood Association for Shelter Assistance
<b>NP</b>	Nonviolent Peaceforce
<b>PAMANA</b>	Payapa at Masaganang Pamayanan
<b>PNP</b>	Philippine National Police
<b>TAF</b>	The Asia Foundation
<b>UNDP</b>	United Nations Development Programme
<b>UNICEF</b>	United Nations Children Fund
<b>WFP</b>	World Food Programme

# **L**IST OF FIGURES

- Figure 1.** MWDECC's Organizational Structure and Composition
- Figure 2.** MWDECC's Project Team for ERRCM

# L

## IST OF ANNEXES

- Annex 1.** Spot Map of ERRCM Interventions in Barangay Gawang
- Annex 2.** Water Test Data (Level 1 and 2 Water Supply System)
- Annex 3.** Consolidated Photos of Project Components
- Annex 4.** Integrated Progress Monitoring Matrix for Barangay Gawang, Datu Saudi Ampatuan, Maguindanao, as of December 2012
- Annex 5.** List of Officers and Members of Gawang Fisherfolks Association including DOLE registration
- Annex 6.** List of Officers and Members of Gawang Free Weavers Association including DOLE registration
- Annex 7.** List of Officers and Members of Neighborhood Association for Shelter Assistance (NASA)
- Annex 8.** List of Officers and Members of Barangay Water and Sanitation Association (BAWASA)
- Annex 9.** List of Officers and Members of Gawang Peace Watch (GPW)
- Annex 10.** List of Core Shelter Beneficiaries
- Annex 11.** List of Beneficiaries for Shelter Repair Assistance
- Annex 12.** Memorandum for Botika ng Barangay (BnB) Operation
- Annex 13.** Peace Covenant
- Annex 14.** Certificates of Turn-Over and Acceptance



## EXECUTIVE SUMMARY

This Terminal Report covers the period from October 2011 to November 2012 for the implementation of **Integrated Early Recovery and Rehabilitation Project at Barangay Gawang, Datu Saudi Ampatuan, Maguindanao** led by **Moro Women Development and Cultural Center, Inc.** in partnership with municipal and barangay local government units, and community leaders.

Barangay Gawang is located in the innermost part of the Municipality of Datu Saudi Ampatuan. It is about 2.7 to 3.0 kilometers or approximately 30 to 40-minute walk from the main road of Barangay Dapiawan, passing through Barangay Elian. Gawang is a marshy area.

Its total population is Five Hundred Sixty Seven (567) families, all Maguindanaoans and Islam believers -- distributed among sitios of Padian sa Isnin, Kapulan, Baliken and Buligan. Primarily, the community's sources of livelihood are fishing, mat weaving and nipa roof-making. They sell their finished products in the market of Dapiawan.

The Barangay Center has no documented profile of the barangay. These informations were gathered through the initiatives of MWDECC from FGD and consultations with the people in the community, some barangay leaders, elders and commanders.

The 2008 Armed Conflict caused widespread damage to the lives of the people in the community of Gawang. Their livelihood sources, personal properties and infrastructures were ruined. The conflict caused stress, trauma and death. The forces hit the area with mortar shells and bullets which burnt the houses, ruined the rivers and the agricultural lands, and killed people. Massive evacuation happened in the barangay. Women, children and elders were greatly affected while men helped in the mobilization of their family. They were not able to save their properties. There was a great number of residents from Gawang were directly affected by the 2008 Armed Conflict, although there is no documented accurate data on the number of displaced individuals, number of death and properties damaged.

The residents from Gawang stayed almost 3 years in the evacuation site and they relied only on the relief goods and other non-food items given to them just to sustain their daily needs. There was no other way for them to return back to their community. However, they started to realize to return back to their community last 2011 when ERRCM-ARMM Desk through MWDECC provided assistance to them.

Moro Women Development and Cultural Center gladly accepted the task of working with ERRCM-ARMM on the Project; the overall objective of which is to contribute to the efforts of national and local government in facilitating the return or resettlement and early recovery of

populations displaced by the armed conflict from August 2008 onwards and to establish the foundations for sustainable peace and development in affected communities.

The Project's purpose is to support communities transitioning from relief to recovery and development, and help restore socio-economic life in a long-term capacity. It aims to contribute to the efforts of the national and local government to establish foundations for sustainable peace and development in Mindanao.

Specifically, it seeks to:

- Support the transition from relief to early recovery of at least 75,000 displaced persons through the restoration of community infrastructure and basic services, including shelter, access to water, sanitation and health facilities, nutrition, education and psychosocial rehabilitation
- Contribute to reducing the vulnerability of at least 90,000 displaced persons through livelihood assistance, 40% of which will be women-led
- Strengthen the capacities for local governance on early recovery, response, disaster preparedness including coordination of early recovery efforts

The MWDECC availed four (4) components of the project, such as, 1) Support to Infrastructure Development; 2) Support to Basic Services; 3) Support to Livelihood; and 5) Rebuilding Social Cohesion. MWDECC started its project implementation by constructing the core shelter units, conduct of trainings, dialogues, meetings and construction of other infrastructures and facilities. The barangay leaders and council gave their commitment to support the project and assist its successful implementation. The beneficiaries also strongly supported the project by exerting their efforts in the construction and installation of facilities especially in the hauling of the materials and through their active participation in the trainings and other activities.

For the **Component 1**, the following were accomplished: construction of 35 units of core shelters, additional construction of 30 core shelter units instead of repair of shelter, installation of 3 units Level 1 and 1 unit Level 2 potable water systems and provision of food for work.

The following were accomplished under **Component 2**: construction of 1 unit Barangay Health Station, renovation of 3-room School Facility, conduct of training on Primary Health Care and Reproductive Health, establishment of Botika ng Barangay (Village Pharmacy), provision of play therapy to more than 200 children, and conduct of Trauma Counseling and other psychosocial activities participated by more than 200 residents.

For the **Component 3**, the following were implemented: provision of fish cages and bangka to 30 men beneficiaries, distribution of livelihood package for mat weaving and bag making with 1 unit showroom to 30 women beneficiaries; and provision of garden tools and seeds to more than 160 families. The beneficiaries of livelihood packages were organized into people's organizations and capacitated with knowledge and skills on management and livelihood development.

And under the **Component 5**, the following were realized: conduct of peace constituency activities, conduct of training on Culture of Peace integrating gender sensitivity, conduct of dialogues and meetings for conflict resolution, and training and coaching on peace-based community organizing and organization of Gawang Peace Watch.

The total budget allocation for this project is Php5,686,800.00. A huge amount of the budget is allocated to Component 1 with a 56.89% budget line, followed by Component 2 with a 28.15% budget line, next is Component 3 with a budget line of 11.08% and the lowest is the Component 5 with 3.88%.

The MWDECC primarily met the overall objective of the project. It has a remarkable impact on both community and MWDECC. The project was well accepted due to its relevance. It was also the first time for the community that such assistance was provided. The infrastructure renovation assistance was an advantage to the school and provided a more conducive learning space for the children. The core shelter provided accommodation to the evacuees after their displacement and the botika ng barangay and barangay health station gave them an access to basic health services. One thing that MWDECC is happy about is that real transformation and a peaceful environment is felt and seen by whole community. It is a new community with shelters, social services, etc. has been constructed; and that happened with the help of Gawang residents who realized the value of bayanihan and were able re-build their community with resilience.

MWDECC followed the protocol of the government in process implementing the project components. The coordination was successful with careful and respectful approach in discussing the overview of the project. Most line agencies responded positively and were committed to the project for its long term or even perpetual sustainability. The Department of Health committed to provide Health Workers for the newly built Barangay Health Station and support the operation of the Botika ng Barangay so as to give services to the people like health maintenance of infants, provision of medicines for the sick, giving health advices to the pregnant women and other health concerns. The Department of Education is committed to provide volunteer teachers for the School Unit to make education accessible for the children. The people also will be assisted by Department of Agriculture (DA) and Bureau of Fisheries and Agrarian Reform (BFAR) in exploring existing resources in their area and building livelihood skills and other technical assistance needed. The MWDECC Project Team integrated the value of giving importance to what is received. This connotes responsibility in taking care of one's own core shelter and other tangible developments in the area.

To well implement the other components of the project, the Project Team coordinated with other partners or networks to help conduct the activities based on their expertise. The Municipal Local Government Unit was tapped for the updates of development from Municipal Level that could be availed by the community especially those related to Disaster Risk Reduction efforts and information about the Barangay Gawang.

The Municipality recognizes the people in the community with their efforts and initiatives in running their political system in the area. The Barangay Local Government Unit (BLGU) of Gawang has less contribution to the development because of the dynamics between them and

the people in the community. The MWDECC organized peace core group in the Barangay whose main task was to handle the peace and order situation in the community. The Peace Core Group members were trained on Disaster Risk Reduction to help identify the contingency plans for their area. People's Organizations (POs) were organized also for specific purposes in case any untoward situation occurs in the area. These efforts were formed even in the absence of the Barangay Leaders for the community to function well and become more pro-active.

The project yielded good results, based on the feedback of the people in the community as well as the tangible outputs. One of the beneficiaries said, *"nakapila pulo lagon den e Gawang na dapan barangay health center, water system (basic services) uged saguna na sa ludep bu a isa a lagon na nailay nami langon ento ba"* (Gawang has been existing for many years but it never had Barangay Health Center, Water System but now the Barangay already had it only within a year). She further said, *"edsukor sukor kami sa ALLAHUTAALA ka nakauma kano"* (We are very thankful to Allah for your coming here).

The infrastructure development especially the core shelter was the most significant to them. The Barangay Health Center, Botika ng Barangay and all other components are a great help and an advantage to the barangay to make access to the basic services more possible. Some changes also in their perception and behaviour were observed basically on how they believe in the value of education. Most of the youth and parents before were saying that the most important ambition of their children is to go abroad while now they already give value to education as an important aspect of the development of their children so that they can contribute more to the society. MWDECC which is a development-oriented organization, served as the channel of ERRCM-ARMM for peace and community development as well as an eye-opener and an inspiration of the people in the community. Before the project, Gawang residents were not aware of the value of participation and cooperation. After the project, the community noticed the changes in their perception and lifestyle; they became more positive in their outlook in life.

The people in the community also learned to love the MWDECC staff, pleading for their continued stay in the community even without attachment to the projects. They kept on asking when will be the next visit and some expressed dismay when they were informed of the end of the project. According to the beneficiaries, the project made a great impact not on tangible dimensions but also in the hearts of the people. The friendly and respectful handling as well as good approach of the staff contributed so much to the good relationship of the community to the MWDECC and to the success of the project implementation.

Generally, the team made a great effort and realized its dedication in providing service to the community. The initiatives, cooperation, time and the sacrifices of the community turned into a fulfilling result of the project. This remarkable experience will never be forgotten by the people who learned to love MWDECC as if part of the community and MWDECC became more enthusiastic to help. Building rapport with the community was challenging since the people in the community were thinking that interventions and projects from outside were anti-insurgency or they did not want to be penetrated by the people from outside their place because the most important for them is their principle and respect to them. But because of respectful and positive

approach, they welcomed the development initiatives offered to them by ERRCM-ARMM through MWDECC. The MWDECC also realized that despite being women they are strong enough to face those challenges because the intention to help was pure. The team built good relationship and trust to the community; which, even long years after the project will be held as treasures and wonderful memories to remember.

## I. BACKGROUND

### A. The Early Recovery and Rehabilitation Site

#### 1. *Barangay and Community Profile*

Barangay Gawang, Datu Saudi Ampatuan Municipality, province of Maguindanao is one of the barangay beneficiaries of Early Recovery and Rehabilitation for Central Mindanao (ERRCM) project. It is approximately 2.7 to 3.0 km away along the national road from Barangay Dapiawan. This is an adjacent barangay of Madia, Elian, Dapiawan and Andavit wherein all of these barangays belong to Datu Piang before Autonomous Region in Muslim Mindanao executed its autonomy/authority to create municipalities in the early part of 2000.

Barangay Gawang was one of the sitios of Barangay Andavit in which the later was considered capital Poblacion barangay of Datu Piang. The Barangay was known before as Sitio Damagui during the time of President Ramon Magsaysay and Mayor Datu Pendililang Piang on 1952. Dilabayan Manabo, the one ruled as Barangay Chieftain, asked Datu S'ngko Mantawil who was barangay Chieftain of Barangay Andavit to separate the Sitio Damagui into barangay. The word Gawang is a Maguindanaon term meaning an elevated area in the marsh in which people in this area are planting corn because of its fertile soil that came from the water hyacinth compost.

The chieftain, Dilabayan Manabo, built his community with unity for all or among the populace. They created "*Padian sa Isnin*" as festival week. The form of governance they adopted had simply united them and they were supportive of whatever decision they collectively achieved. The election of leaders was done through collective and consensus process. The chosen ones were exercising political power and practically ruling to put everything into order.

In 1967, certain "Kumander Toothpick" disturbed the peace of mind of everyone as part of the pre-martial law phenomenon.

The Barangay has a population of more or less 567 family heads living in the four (4) sitios: Sitios Kapulan, Baliken, Padian sa Isnin and Buligan. The population was distributed to these 4 sitios. The barangay is located in the inner part of Datu Saudi Ampatuan and it is in a lower ground/topography surrounded by small rivers and forest.

Barangay Gawang has no constructed road, only human-made dike, which served as the way of entering the barangay. There is no other means of access except for a long distance walk that takes 30 to 40 minutes and one has to pass Barangay Elian before reaching Gawang. The support of the people in the community was important during project implementation, and the use of bicycle had helped in the access of the implementers with great ease to carry materials for (everyday) visit in the area.

The Barangay population is composed of Maguindanaon tribe and all Islam believers living harmoniously in the area with livelihood coming from fishing, weaving and selling of agricultural products in the market like fruits, copra, bamboos, corns and chicken.

## **2. Displacement History**

On August 28, 2008, the conflict between the Armed Forces of the Philippines (AFP) and elements of the Moro Islamic Liberation Front (MILF) erupted. It was caused by the aborted signing of the Memorandum of Agreement on Ancestral Domain (MOA-AD). This had caused massive community displacements in several provinces in Mindanao. The said armed encounters have also resulted to damages of households, infrastructures and properties. It also caused psychological trauma on affected individuals and communities, loss of livelihood, termination of school attendance of children and youth, and claimed numerous lives.

One of the most affected communities by the recurring armed conflict was the Province of Maguindanao, where the concentration of Military Operations against troops of MILF Brigade Commander Ameril Umbra Kato was situated.

Barangay Gawang, Datu Saudi Ampatuan, Maguindanao was one of the barangays that suffered much. This barangay is geographically located in the innermost community of the said municipality. The residents of Barangay Gawang were totally displaced. All their houses were totally damaged and burned as well as their livelihood equipment/implements. With God's Grace, they were included in the ERRCM project and availed of all the components of the program.

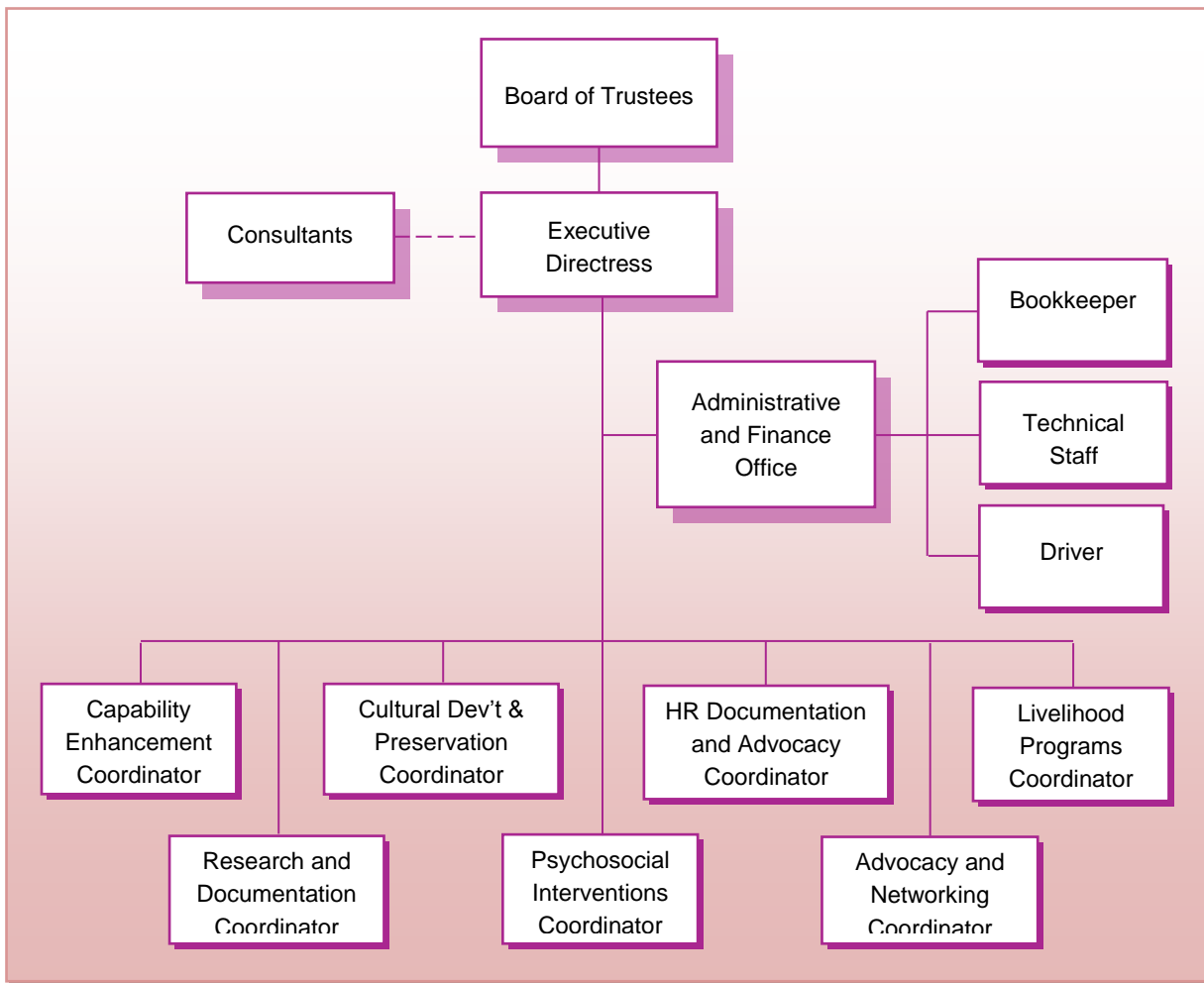
## **B. The Implementing/Responsible Partner**

The **Moro Women Development and Cultural Center (MWDECC), Inc.** is a non-government organization that was founded in 2008 but officially registered at the Security and Exchange Commission (SEC) on July 22, 2009 with Registration Number CN200928142. This was created to provide the multifaceted needs of women especially Bangsamoro women in conflict-affected areas. It paves the avenue not only for Moro women's personal development but their active involvement in the socio-economic and cultural development of the nation. The women behind this organization are committed to devote their skills, capacities and services to the fullest. The highest policy-making body of MWDECC is its Board of Trustees, while its office is headed by an Executive Directress.

MWDECC envisions a community where women's participation in development undertakings is recognized and space for cultural preservation and education is provided. Its mission is to empower women through exposures and engagements in socio-economic and cultural development. And its goals are: 1) Mobilization of women to maximize their potentials; 2) Generation of resources to support women development programs, and 3) Conduct of researches on Moro cultural, social, economic, political & environmental concerns

**MWDECC's Programs and Services** are: Capability Enhancement; Research and Documentation; Livelihood Programs; Relief, Health and Psychosocial Interventions; Cultural Development and Preservation; and Human Rights Documentation and Advocacy. The MWDECC is operating Mindanao-wide but focuses on the provinces of Maguindanao and North Cotabato. Its main target is the women of the conflict affected areas and other marginalized and oppressed communities.

### Organizational Structure and Composition

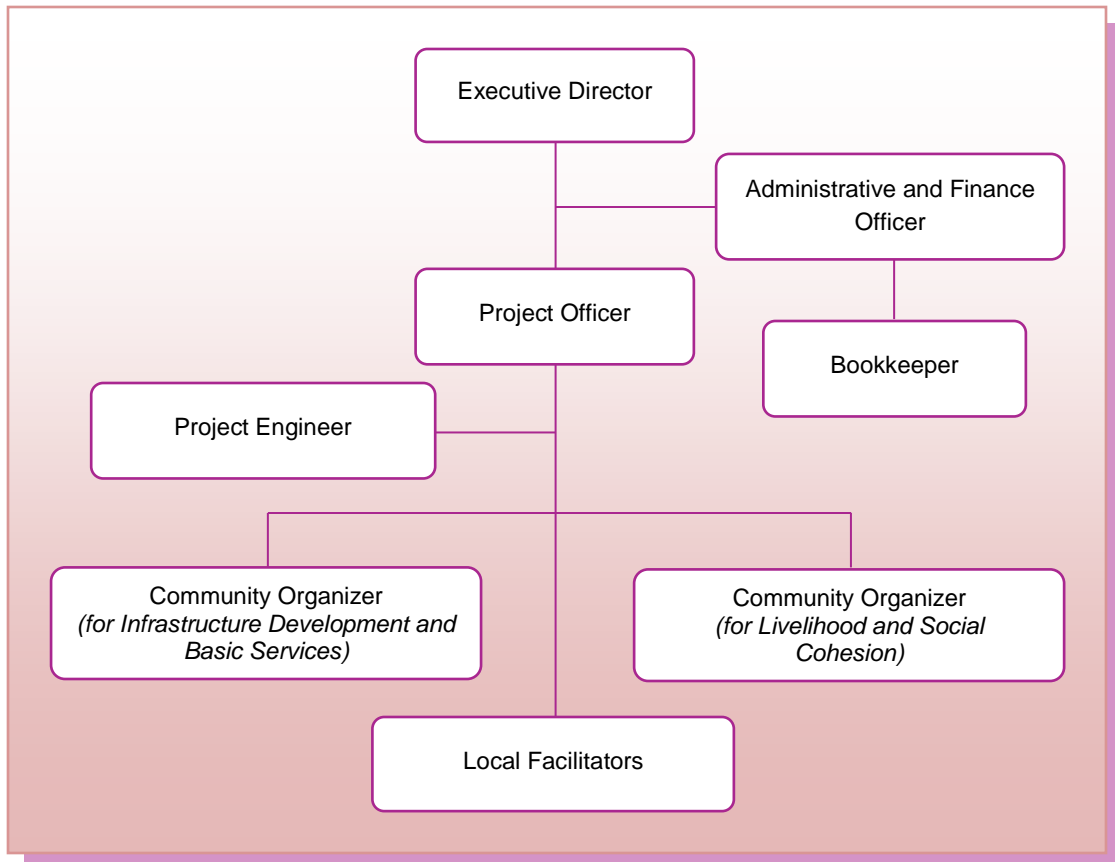


**Figure 1. MWDECC Organizational Structure & Composition**

The projects implemented by MWDECC are as follows: 1) **Data Collection on the UNCRC Monitoring Process** in Cotabato City from April 2011 to December 2012 funded by Save the Children; 2) **Establishing Prevention and Response Mechanisms against Trafficking in Persons** in Conflict-Affected Provinces in the Philippines in 14 barangays of Northern Kabuntalan and 5 barangays of Datu Saudi Ampatuan from October to December 2011 funded by Child Alert Mindanaw and UNICEF; 3) **Conflict Mitigation** in Barangay Luanan, Aleosan, Cotabato from September 17 to November 30, 2012 funded by The Asia Foundation (TAF); and recently, 4) **Early Recovery and Rehabilitation for Central Mindanao (ERRCM) Project** in Barangay Gawang, Datu Saudi Ampatuan Maguindanao from October 2011 to November 2012 with funding support from GPH-UNDP-EU. Under ERRCM Project, MWDECC implemented four (4) components of the project, i.e. Support to Infrastructure Development, Support to Basic Services, Support to Livelihood and Rebuilding Social Cohesion with an approved budget of Php5,686,800.

### C. Project Implementation and Management

MWDECC organized a Project Team to successfully implement the project. The Project Team was composed of a Project Officer, a Bookkeeper, a Project Engineer, Community Organizers and Local Facilitators. The Project Team is under the supervision of the Executive Director. Below is the illustration of the composition of the Project Team:



**Figure 2.** MWDECC Project Team for ERRCM Project

As illustrated above, the **Executive Director** oversees the implementation of the project and the management of the financial transactions. She establishes partnerships and good relationship with the concerned provincial, municipal and barangay local government units, government agencies, international and local NGOs, ceasefire monitoring mechanisms, and community leaders that can support the implementation of the project.

The **Project Officer** is the over-all in-charge in the supervision and monitoring of the implementation of the project. She is committed to ensure that the project key components are implemented according to the design and within the budget allocation.

The **Project Engineer** is in-charge in the construction and installation of hard components and ensures that these will follow the approved designs.

The **Bookkeeper** is in-charge in handling the budget of the project and ensures that it is disbursed based on the approved budget line and attached with supporting documents.

The **Community Organizers** are those who are staying in the community. They are in-charge in organizing meetings, dialogues, and trainings. They organize the beneficiaries and facilitate the organization of POs necessary in the successful implementation of the project.

The **Local Facilitators** are those leaders and who are key persons in the community who can help the project team in implementing the project. They are also bound to assist the project team in resolving problems that may arise during the implementation of the project.

## 1. **Selection of Beneficiaries**

MWDECC followed the criteria set by the ERRCM in selecting the beneficiaries with the assistance from the community leaders to make it sure that conflict between and among the residents of the barangay will not be created as a result of the selection.

Following were the criteria followed by MWDECC:

- 📌 Those who have already returned in the barangay;
- 📌 Those who are greatly affected by the 2008 armed conflict, with damaged and burned houses and properties, and
- 📌 Those who are already vulnerable and poor even before the 2008 armed conflict.

The selection process was well coordinated with the community leaders to ensure that it will not cause misunderstanding and result to a violent conflict. MWDECC conducted an orientation with the community and explained that there are criteria in selecting the beneficiaries. Choosing the beneficiaries was made very fair in. Profiling of beneficiaries was conducted.

## 2. Actual Implementation

Right at the beginning of the implementation of the project in Barangay Gawang, MWDECC already encountered unforgettable experiences and initiated strategies to cope-up with that situation. Below are some of the significant experiences and processes encountered under the project:

- ❏ MWDECC started the implementation of the project by coordinating with the LGU and acquired documents needed to start the implementation. At first, the BLGU particularly the Barangay Chairman and her husband still assisted the Project team. But when the delivery of construction materials started, they talked to the project team and expressed what they wanted. They asked for their share from the project. MWDECC refused because this is against the policy of ERRCM project and MWDECC as well.
- ❏ The project team investigated the barangay and looked for the leader/s who could control the barangay chairman and her husband. They found out that the MILF field commander present in the barangay should be the one to be approached and the team did it. Thus, the implementation pursued.
- ❏ During the first week of construction of core shelter units, the MWDECC Project Team's courage was challenged. A conflict between two armed groups arose, which caused them to almost give up. But, then, they strongly held on because they did not want to frustrate the community and give them false hope. The situation caused a little delay in the implementation of the project, but in spite of that, the team tried to catch up with the delay and made it up to the deadline given to them.
- ❏ The MWDECC Project Team thought that the challenges would end up after the conflict. But, then, another incident hindered them – the problem with the barangay chairman, her husband and some of her alliance in the barangay. They were comparing the ERRCM Project, particularly the construction of core shelter units, with the projects in other areas in which the BLGU was given a share as SOPs. Thus, they were also asking for their share from the construction of core shelters of the ERRCM Project which was already completed. The Barangay Chairman's husband called and threatened MWDECC that they will file a complaint with the ARMM Governor.
- ❏ MWDECC met with MLGU particularly the MPDO and discussed the issue. It was decided that this attitude of some BLGU should not be tolerated. The project team met also the community leaders and residents of the barangay and explained to them that they will not give any single centavo. The community supported the stand of MWDECC since some of them were also mad at their barangay chairman.
- ❏ Due to the misunderstandings between the barangay chairman and the project team, the communication was cut off. MWDECC concentrated on the implementation of the

project and only talked with the community leaders and the beneficiaries. ERRCM is a community driven project; thus, what was important was to deliver the project completely and satisfy the beneficiaries.

- Series of dialogues and meetings were conducted to avoid misunderstandings and in order to immediately solve problems that arose. Constant consultations with the barangay leaders and beneficiaries were done especially in decision making.
- The MWDECC earned the trust of the beneficiaries and established with them the sense of ownership with the project. They consulted the project team when they were making decisions even though the decisions were not related to the project.
- One of the values that the project team did best to observe and promote was the support to local industry by purchasing and promoting materials, supplies, and products that were made, produced and sold by the barangay. During trainings, meetings or ceremonies, locally-made foods were served. For the construction of infrastructures, local skilled laborers who were either relatives of the beneficiaries themselves or residents of the barangays were tapped. Local facilitators who were part of the project team were also members of the people's organizations which were organized and capacitated to sustain the project, ensure maintenance of installed facilities, and who became peacebuilders and conflict mediators of their respective barangays.
- The quick impact projects provided to them were designed to maximize the abundant resources present in the barangay.

### **3. Additional Mobilization of Resources**

To augment the food for work provided by the ERRCM, MWDECC submitted proposal to World Food Program (WFP) and included the Food for Training. The WFP positively responded and provided Food for Work and Food for Training. Thus, not only those involved in construction and hauling received the Food for Work but also those who participated in the trainings and bio-intensive gardening. There were 83 sacks of rice distributed as Food for Training for the participants of COP Training, Primary Health Care Training and Bio-intensive Gardening. For Food for Work, there were 547 sacks of rice provided by WFP, distributed twice through the Community and Family Services International (CFSI). Not only rice was distributed, but also oil for Food for Training.

To continuously capacitate the organized peace core group, the Gawang Peace Watch (GPW), MWDECC linked it to Nonviolent Peaceforce (NP). NP provided GPW with training on Basic Human Rights, Child Rights, and Early Warning and Early Response (EWER). All expenses were shouldered by NP. Another training is scheduled in January 2013.

MWDECC linked also with Bureau of Fisheries and Aquatic Resources (BFAR) and asked their counterpart for the QIP for men. BFAR provided 10,000 fingerlings for the fish cages.

#### **4. Eliciting LGU Participation**

It is important that the LGU and community feel their ownership of the project. Thus, before the start of project implementation, MWDECC coordinated with the LGUs and, positively, the latter assisted in providing all the documents required for the implementation of the project. They also facilitated the donation of land where the infrastructure units were constructed. The BLGU also committed to deliver their counterpart for the project.

MWDECC also coordinated with the MILF leaders and commanders who are recognized and present in the barangay. They also promised that they will assist in the implementation of the project and share their counterpart in terms of labor and in settling conflicts that may arise.

#### **5. Mainstreaming and Sustainability**

Mainstreaming and sustainability are important in every project implemented. To ensure that all of components will not be damaged again by armed conflicts, MWDECC was already thinking the possibility of declaring the barangay as a peace sanctuary even at the start of the implementation. Barangay Gawang was successfully declared as peace sanctuary during the turn-over ceremony.

MWDECC also saw to it that in every component, mainstreaming and sustainability are guaranteed. For **Component 1**, NASA and BAWASA were organized and in-charge for the core shelter units and water systems, respectively.

For **Component 2**, MWDECC made sure DepEd will provide teacher/s for the renovated school and that it will be opened next year.

The commitment of Municipal Health Office (MHO) to provide health worker/s for the constructed BHS was also asked. And two (2) persons were already trained to be the operators of the established Botika ng Barangay (BnB).

For **Component 3**, two (2) People's Organizations (PO), 1 for men and 1 for women, were organized and registered with the DOLE. The QIP given to them was designed to have its sustainability.

And for **Component 5**, Gawang Peace Watch (GPW) was organized, members of which will be responsible in facilitating the resolution of any security issue that would cause tensions or conflicts in the area, which may further result to violence or internal displacements.

## II. OUTPUTS AND RESULTS

### A. Component 1

#### 1. Construction of Core Shelter units with Water and Sanitation Facilities



One of the houses in Barangay Gawang prior to the ERRCM Project

The construction of 35 units core shelters was 100% completed at the end of January 2012. After the completion, the beneficiaries immediately occupied the core shelter unit and gave their vacated houses to those residents who have not availed the said structure.

The dimension of each core shelter unit is 12x16 ft. made up of coconut lumber, kalakat for walling, and galvalume with flashing and gutter for roofing. Each core shelter has a minimum distance of 6 meters and a maximum of 20 meters.

There were 3 units with 7 cubicle/bowls latrine/sanitation facilities constructed with a ratio of 1 cubicle for every 5 units of core shelters. It was divided for men and women. It has a 2.4x1.2x1.5 dimensions with a 4.32 cu. m volume of septic tank divided into digestion and leaching chambers.

The core shelter units and the sanitation facilities were constructed in a lot donated by Abdullah Balon who lives in Sitio Padian sa Isnin, but the timeframe is only for 10 years. It is expected that after that period, the beneficiaries will have a well-established living condition and permanent houses on their own.

Prior to the intervention, there were 2-3 families shared in one house which was very small and made of indigenous materials like: coconut leaves or palm leaves for the wall, and bamboos for the flooring, with no latrine.

People were vulnerable to viral and vector diseases like dengue, malaria and elephantiasis which are high risk in the place especially among children. Most of the houses were located in innermost part of the barangay. There was no safe space for the children to play. Most of the residents were still in the evacuation center and nearby barangays. The barangay was really devastated and deserted.



One of the 35 core shelter units constructed under the ERRCM Project

As a result of this intervention, the returned families increased from 27 households or 30 families to 75 families. There is only 1 family per house, and families in the nearby barangays already returned. Houses of the beneficiaries of core shelter units were given

to the other families. Thus, not only the beneficiaries of core shelter units returned to the barangay but other families as well. Noticeably, the barangay transformed from a deserted place to a more lively community.

One of the problems that occurred, however, was the clustering of core shelter units because some of the sitio leaders wanted to build the house in their sitio. The problem is, other sitios that are situated in the inner part of the barangay requires riding bangka to get there. That meant, the project implementation would experience double difficulties and burden as far as hauling was concerned. The limited number of the units became also an issue since not all the residents were given.

The simultaneous implementation of ERRCM and PAMANA led to the shortage of materials like lumber and kalakat while prices increased. The issue of lumber shortage was one of the reasons why some of the lumbers used were found out defected (binukbok) during the inspection.

## 2. Repair of Shelters



From the original shelter repair assistance to the construction of core shelter unit with 10x12 ft. dimension

Repair of shelters was diverted into a construction of another 30 units core shelters since there was no house to be repaired in the barangay. Houses in the barangay were totally burned during the 2008 armed conflict. Each core shelter has a dimension of 10x12 ft. made up of coconut lumber and indigenous materials locally called “bagumbong”. The roof was also made up of galvalume. These were constructed in Sitio Buligan in a lot donated by Hadji Pombaya Lagasan.

The problem encountered by MWDECC was the very small budget for a construction of core shelter units since it is originally intended for a repair of shelter only. The first design presented was that the roof would be made of nipa. But it was rejected by the community because they wanted the same design as the first constructed units since they have the same situation with the beneficiaries of those units.

MWDECC has no choice but to construct another 30 core shelter units made of galvalume roof. But MWDECC sought the counterpart of the community leaders in terms of labour. Series of dialogues and meetings were conducted to convince them. The labour for construction became a combined counterpart of MWDECC and the community.

## 3. Installation of Level 1 and Level 2 Potable Water System

The installation of Level 1 potable water system started on January 23, 2012. There were 3 units installed. These were made of Jetmatic pump with blue pipes. The suction pipes measured 2 inches. The depth of its bore hole ranges from 80-100 meters. The 2 units of



One of the dug wells affected by flood

Level 1 potable water system are located in Sitio Padian sa Isnin, while the other one is located in Sitio Buligan.

The problem encountered by MWDECC in installing the level 1 water system was the occurrence of flood that affected the 3<sup>rd</sup> unit of water system. The drilling was done twice; thus, the completion was delayed. It was only completed in March 2012.

The installation of Level 2 water system was started in July 2012. Fabrication of tripod was done first because the project team experienced difficulty in excavation due to the rainy season that caused floods.

Prior to the ERRCM project, the residents' only sources of water were dug wells. When floods occurred, they suffered most because all of their dug wells became unsafe for drinking, which caused diseases especially among the children.



Level 1 water supply system installed in Brgy. Gawang

When the installation, especially the Level 2 Water System, was completed, the beneficiaries were very happy. The children enjoyed the flowing water very much. The difficulty of accessing to safe water which is not affected by floods was finally answered.

The problem encountered by the MWDECC was primarily the hauling of materials because the road was damaged by the floods. The project team had to hire Carabao which was slower and could transport only very limited materials.



Level 2 water supply system installed in Barangay Gawang

#### 4. Provision of Food for Work

Provision of Food for Work was done twice. The first distribution was conducted on December 30, 2011. There were 40 families who received 39.5 kgs of 7-toner rice each. They were those who participated in the hauling of materials and construction of core shelter units.

The 2<sup>nd</sup> phase of distribution of food for work was conducted on August 15, 2012. The rice was given to 95 families who were involved in the hauling of construction materials for remaining core shelter units, installation of Level 1 and Level 2 water systems, construction of BHS and BnB, and renovation of school facility. Those who established their gardens also received as promised by MWDECC. They received the same quantity and quality of rice.



The project team distributed bags of rice as food for work for those who are involved in hauling and construction works

The food for work distributed to the beneficiaries helped them a lot. It motivated them to work hard and developed their gardens, which is another source of their food.

## B. Component 2

### 1. Construction of Barangay Health Station



1 unit Barangay Health Station constructed in Barangay Gawang to help improve the access to and delivery of health services in the community

The construction of Barangay Health Station started in the last week of June 2012 and completed only as of November 22, 2012 including the painting. The construction was very slow because of the frequent rains that resulted to flood. Hauling of materials became more difficult since the road was already damaged by the flood. It was constructed in the land in Sitio Padian sa Isnin donated by Abdullah Balon. To guarantee that it will not be affected by flood, earth filling was done to elevate the flooring to 3ft.

Medical equipment was also provided so that the Barangay Health Station could start to operate and serve the needs of the residents of Barangay Gawang.

Prior to the implementation of the ERRCM in Barangay Gawang, there was no regular health services rendered to the residents due to the absence of health facilities in the barangay. The health workers rarely visited the barangay; it is good if they can visit once a month. The residents have to go to Barangay Elian, which is 3.5 to 4 km away, to avail of health services. Thus, they are relying on the medicines they can buy, and they used to consult the health workers only when medicines cannot cure their diseases. Pregnant women cannot undergo prenatal checkups.

When the construction of BHS was completed, the residents are very happy as well as the midwife supposedly assigned to the barangay. The Municipal Health Office committed that the health worker/s will start to report in Barangay Gawang by January 2013. Services to be offered will be mother and child health care including pre-natal checkups, immunization, medical consultations and child delivery services.

## **2. Training on Primary Health Care and Reproductive Health**

On June 3-5, 2012, training on Primary Health Care and Reproductive Health was conducted. This activity was participated by selected mothers from the four (4) sitios of Barangay Gawang. One of the training's resource persons came from Municipal Health Office (MHO). There were 32 mothers and girls who successfully participated the said activity.



**Mothers and girls were trained on Primary Health Care and Reproductive Health**

The immediate major output of the training was the “definition of health”, which was made clear to them. By understanding it, the participants were able to assess their health status. The reasons why people get sick were also included in the training. Through the Training on Primary Health Care and Reproductive Health, the Gawang residents were informed about how people get sick. The participants were also trained on what to do basically to prevent diseases and how to maintain their health to stay healthy all the time.

One of the major topics discussed during the training was prenatal care. Basically the objective of discussing this topic was to inform and educate women/mothers about pregnancy. The mother-participants were trained on what are to do when they are pregnant. They were also taught about basics of pregnancy, i.e. “Is pregnancy normal or abnormal?” Through this, they will be able to assess themselves when they get pregnant. It is a fact that pregnancy is a little bit long term process; hence, they were also trained on how to take care of themselves during every stage of the entire period.

The procedures of the training were lectures and workshops. The participants enjoyed the training very much since they were able to participate in the workshops. In totality, the activity was very successful.

## **3. Establishment of Botika ng Barangay**

The construction of Botika ng Barangay started on March 26, 2012 and completed on April 30, 2012. Medicines and general merchandise were provided so that the residents would no longer go to market to buy medicines. Two (2) BnB operators, who will manage the said unit, were also trained.



**Botika ng Barangay (BnB)  
constructed in Barangay  
Gawang**

Presently, the problem is that the IPHO does not issue License to Operate. They are now requiring a Pharmacist to operate a Botika ng Barangay since there is a memorandum came from DOH regarding that concern. But the MWDECC decided to still open the unit and started the operation as of the reporting period. The residents are very happy because they can now buy medicines within the barangay.

Before, the residents used to buy over the counter medicines in Barangay Dapiawan and Poblacion Datu Piang. They have to hike approximately 2.7 to 3.0 km going to Barangay Dapiawan and have to pay P50.00 fare for tricycle if they need go to Poblacion Datu Piang. If the need is immediate, they have to hire a motorbike and they will pay P100.00 fare from Gawang to Dapiawan. But for the medicines prescribed by doctors and cannot be bought over the counter, they have to travel to Cotabato City.

#### **4. Renovation of School Facility**



**A school building in Barangay Gawang  
damaged by armed conflict**

A 1-storey with 3-room school building was constructed in Barangay Gawang in 2000. But it just operated more than a year and was closed when a local conflict erupted in 2003 between the group of CVOs in the barangay and Datu Andal Ampatuan. The said facility was damaged, and it could not operate again. In 2008 armed conflict between the AFP and MILF, the barangay was also affected, which worsened the damage to the school. The residents could not use it even they already returned to the barangay. Their children are studying in Barangay Dapiawan and have to travel

approximately 2.7 to 3.0 km, with a total of more than 5.0 km distance to travel in 1 day. This is one of the reasons that some of the residents of barangay have not yet returned to the barangay as they are considering the difficulties encountered by their small children. MWDECC consulted the residents and leaders of Barangay Gawang on what should be the right intervention. MWDECC decided to renovate the said facility instead of constructing another unit due to the following reasons:

1. Majority of the leaders and residents wanted that the said facility will be renovated to cater to not only Kindergarten or Grade 1 but Grade 1 to Grade 3 pupils since the present structure is already 3 rooms.
2. The would-be renovated school can cater to not only the children of Barangay Gawang but also the residents of Sitio Binangga, boundary sitio of Barangay Elian, since Gawang is nearer compared to Barangay Dapiawan.

- This can motivate the return of other residents who have not yet returned due to the studies of their children.

The renovation of school facility started on June 2012 and completed as of November 22, 2012. It has a dimension of 7x24 meters. Educational materials and audio visual equipment have been provided to ensure that it will operate in the next opening of classes. The DepED also promised to provide teachers and open the facility this next school year.



**MWDECC totally renovated the school facility in Barangay Gawang.**

MWDECC totally renovated the said facility. The roof and ceiling were totally replaced, the flooring were elevated to 5 inches with semi-concrete partitions, doors and windows were provided, and jambs were also changed. The wall was retouched and the whole facility was painted.



**The newly renovated school facility provided with educational materials and equipment to ensure its operation**

The problems encountered by MWDECC were the same with the construction of Barangay Health Station and installation of level 2 water system. The construction was very slow because of the frequent rain that resulted to flood. Hauling of materials became more difficult since the road was already damaged by the flood.

The school was easily affected by the flood because it was located in the lower part of the barangay. MWDECC tried to elevate it but it was not realized due to lack of time and inaccessibility of road that made the

delivery and hauling of soil for earth-filling even more difficult. What the project team was able to do was only to pile 3 layers of hollow blocks for the partitions.

## 5. Provision of Play Therapy for Children

The Play Therapy for IDP Children was conducted on June 29, 2012. This activity was participated by 117 girls and 148 boys, with a total of 265 children aged from 3-13 years old. They were grouped into five (5) groups based on their ages. The groupings were: 3-6 years old children; 7-9 years old; 10-11 years old; 12 years old; and 13 years old. This play therapy was composed of three (3) sessions, i.e. Groupings and Drawing Sessions, Play Therapy Sessions, and Sharing and Discussions Sessions.



**Play therapy sessions were conducted in Barangay Gawang participated also by children in nearby barangays**

Through this activity, the children were given a space to share their experiences and feelings. The children enjoyed the games. This play became the venue for them to understand each other.

The parents also participated and enjoyed. It could be seen on their faces how they wanted to play. They even cheered to support their children.

## 6. Trauma Counselling and Psychosocial Services for IDPs



**Mothers played volley ball game as part of the play therapy session**

For the trauma counseling, the original schedule was June 11-13, 2012. But due to rainy season that caused flood, the third day which is the play therapy was postponed. This activity has three (3) sessions, i.e. Group Sharing, Spiritual Healing/Therapy, and Play Therapy. All the residents of the barangay participated the said activity including those who were still staying in other barangays where they evacuated.

The first day of the activity was Group Sharing. The participants were grouped into two (2): male and female. This session served as a venue for them to share their experiences and feelings. A 70-year old woman narrated that she will never forget those sleepless nights while she heard the bazookas continuously fired. And she doesn't want to recall those events again.

The second day, June 12, 2012, was a Spiritual healing/therapy. The main topic discussed was Aqueedah Islamia of coping with the effect and impact of armed conflicts. This session was conducted to strengthen the faith of the participants, debrief and heal traumatized residents, and help them rebuild their confidence and trust to move on with their normal lives. This approach was done since this is the most effective approach in dealing them because of being Muslims.



**Play therapy were conducted in Barangay Gawang participated by more 200 individuals**

On July 17, 2012, the Play Therapy session was finally realized. This session was conducted to let the residents play other games because they only play spintop. The player teams were organized which were composed of mixed representatives from the 4 sitios to strengthen the brotherhood and unity between the residents. The MWDECC avoided creating conflict between the residents of the 4 sitios, thus they used this strategy. The staff distributed the game materials and t-shirts to the players. Meals and snacks were also prepared.

The plays were done singly (not simultaneous). The first game played was basketball, followed by volleyball for men, sepak takraw and volleyball for women. Chess game was done simultaneous with other games. Due to lack of time and bad weather condition, badminton was not played but the materials were also distributed for the residents to use it in the future.

After playing, awarding of prizes followed. Prizes awarded were composed of groceries. MWDECC saw to it that all players got awards, both winners and losers. The said activity was not only participated by the residents of Barangay Gawang but also by the nearby barangays. They enjoyed so much. There were 268 individuals who participated the activities; 185 were women and 83 were men.



**Spiritual healing was provided for the residents of Barangay Gawang.**

### C. Component 3

#### 1. Quick Impact Project (QIP) for men



**The fish cages provided to fishermen of Barangay Gawang**

The Quick Impact Project (QIP) package provided for men were composed of banca and fish cages. There are 30 fishermen from the four (4) sitios who received the QIP package. The QIP package was fully delivered on September 12, 2012. The beneficiaries were organized into People's Organization with complete set of officers. The name of their organization is "Gawang Fisherfolks Association" and it was registered with Department of Labor and Employment (DOLE) with Reg. No. 1846-12.

Before the distribution, they were trained on Basic Tilapia Technology and Aqua culturing which was conducted on August 28-29, 2012. They were also equipped with knowledge and skills on project and financial management. The resource person came from Bureau of Fisheries and Aquatic Resources (BFAR) who provided fingerlings as their counterpart.

Prior to the distribution of livelihood package, the residents were only sharing in their Banca (fishing boat) because there were very few who have their own. The problem was that their Banca is already very old and have those damages. And most of them didn't have a fixed income since they are only relying on the available Banca they can borrow. They are very happy when they received the Banca distributed by MWDECC. These also

encouraged them to return to Barangay Gawang since there is already a guarantee for their source of income.

Presently, the beneficiaries of Banca are having monthly income of more than P2,000.00 each. For the fish cages, it is expected that they will harvest the tilapia after 4-6 months and with the projection of income of more than P40,000 each fish cage.

## 2. Quick Impact Project (QIP) for Women



**Provision of required items for the mat weaving and bag making project of women**

Training on Mat Weaving, Bag Making and Management Skills for women was conducted on September 1-2, 2012. It was participated by 30 women who came from the four (4) sitios. This activity aimed to develop the knowledge and skills of the beneficiaries in weaving and to maximize the use of abundant resources in the barangay.

The beneficiaries were also organized into People's Organization named "Gawang Free Weavers Association" and registered with Department of Labor and Employment (DOLE) with Reg. No. 1845-12.

Before the training, the beneficiaries were only weaving mats and selling them in the market at a very low price. But through the training, they learned to make bags, bayong, corsage, wallet and others. Their creativity was developed and they enjoyed in discovering different designs. The price of their new products is higher than the price of mat. MWDECC provided them with dye to be used in coloring pandan, frying pan "kawa", and cash to be used in payment for the pandan stripper/gridding blade and pandan leaves.



**Some of the bags and bayong produced by Gawang Free Weavers Association**

Before, they could only produce 2 big mats in a week and used to sell the 2 mats at a price of P150 to P175. But when they learned to produced Bags and Bayong, they already have additional income. They can now produce 3 pieces of bags every day and sell each of it to P75.00. There are now having a monthly income of not less than P1,000 compared to their income prior to the intervention which is less than P1,000. Promotion is still needed to widen their customers since their products are not yet known to others.

To partially answer it, a showroom where they can display their products was established. It is located near the market place of Barangay Dapiawan.

The problem encountered by the project team was the unavailability of volume supplies of dye for pandan in Cotabato City. They only found one store selling in the city with limited stocks available. You can only find it in the small mobile vendors and mostly selling it in retail in the market. The project team tried to look for more supplies of dye in Davao City where there was only one store selling that kind of dye needed for pandan leaves, but with incomplete kinds of color and insufficient quantity. The project team decided to buy in the three suppliers in order to complete the required quantity.

### 3. *Bio-Intensive Gardening*

To implement the Bio-Intensive Gardening, the beneficiaries were clustered. They were clustered by sitio and four (4) clusters with 60 members were created.

On June 9-10, 2012, Capability Enhancement on Backyard Vegetable and Seed Production Technologies which was participated by 15 female and 41 male, with a total of 56 individuals was conducted. These participants were composed of selected residents from the four (4) sitios of Brgy. Gawang. MWDECC tapped a resource person from Department of Agriculture (DA).



The vegetables are ready to harvest

The first day of the activity was more on lecture and input. Among the major topics discussed by the resource person were Cultural Management, Pests and Diseases Control and Management, Organic Production, and Vegetable Seed Production.

The second day of the training was the actual gardening or hands-on training in order to familiarize the participants with the commodities. There were four (4) communal gardens established and located in every sitio except for those from Sitio Baliken which placed their garden in Sitio Padian sa Isnin since their location is very far. The MWDECC initially distributed, to every cluster, the seeds and garden tools to be used for the communal gardening. The garden tools set were composed of 1 rake, 1 bolo, 1 water sprinkler, 1 shovel, and 1 pickaxe. The vegetable seeds distributed were composed of ampalaya, tomato, pechay, eggplant, upo, sitao and pepper. Problem occurred when the rainy season caused flood to the community. The communal garden was affected and failed. The MWDECC postponed the distribution of seeds to 160 beneficiaries and the second distribution of garden tools although they were already purchased.

The distribution of seeds and garden tools was only done on July 9, 2012. There were 160 households who received seeds. The seeds distributed were composed of seven (7) varieties, the same with what were distributed during the training. The garden tool sets

were distributed per cluster or sitio. Each set was composed of 4 rakes, 4 bolo, 4 water sprinkles, 4 shovels, and 4 pickaxes.



One of the bio-intensive gardens established in Barangay Gawang, where the community now gets their supply of vegetables

But another flood occurred which lost the interests of the beneficiaries. Most of them already refused to establish garden due to the fear that it will be damaged only by the flood and become useless. Some decided to plant the seeds in other barangays where they have relatives. MWDECC should have adopted strategies to motivate the beneficiaries.

One of the project staff observed an old man preparing his land for gardening. MWDECC leadership decided to add the seeds given to him and announced that those who will do the same will be added too. Furthermore, MWDECC used the food for work to motivate them and return their interest. There was also individual coaching

to them on strategies of gardening that will not be affected by flood.

Finally, bio-intensive gardens were established in Barangay Gawang. At present, not only vegetables are present in their gardens. They sell their products and use their income to buy seeds of spices. Floods do not become a problem to them anymore because they now apply what they have learned during the training and coaching.

## D. Component 5

### 1. Peace Constituency Activities

On December 31, 2012, Peace Symposium was conducted to support the local peacebuilding initiatives of the community leaders of Barangay Gawang. The said activity targeted not only the residents of the said barangay but also the nearby barangays who were often affected by rido. They were educated on peace in Islamic perspective. There were more than 500 individuals who attended the said activity. Majority of them were women with a total number of more than 300 individuals and the men were more than 200 individuals. The project was not able to get the exact number because some of the participants refused to register.



A peace symposium conducted in Brgy. Gawang

On June 7-8, 2012, finalization of the GPW (Gawang Peace Watch) Peace Campaign Plan was conducted in support to the local peacebuilding initiatives of the community. Conflict Mapping was also done. The GPW was also introduced to Nonviolent Peaceforce who committed to capacitate the GPW officers and members. The set of officers were also finalized. Possibility of the declaration of barangay Gawang as peace

sanctuary was also introduced to them and they promised to discuss it on their level. There were 26 women and 18 men who attended the said activity.

The declaration of barangay Gawang as peace sanctuary was realized in December 10, 2012 during the Mass Turn-over Ceremony witnessed by the OIC Mayor of Datu Saudi Ampatuan Hon. Atty. Jehan L. Ampatuan, Regional Project Director Prof. Edgardo Ramirez, ERRCM ARMM Desk Project Coordinator Suharto



**Peace Campaign Planning of GPW facilitated by MWDECC Executive Director**

Abas, ARMM DepED District Supervisor Mr. Abdulnasser Kempao, security sectors both AFP and PNP, Tasked Force Ittihad, and representatives from IPHO and LGUs. There were 49 women and 79 men from Barangay Gawang who attended the said activity.

## **2. Training on Culture of Peace and Conflict Management integrating Gender Sensitivity**



**First Phase of Training on COP and Conflict Management integrating Gender Sensitivity.**

This activity was done in two (2) phases. The first phase was training on Culture of Peace (COP) and Conflict Management integrating Gender Sensitivity which was conducted on November 28-30, 2011. The said activity aimed to build awareness among participants on Culture of Peace principles and approaches and improve their skills in leadership and conflict management. It was participated by 15 female and 41 male, with a total of 56 composed of BLGU, IDP Leaders, Sangguniang Kabataan Leaders, Women, PO leaders and both religious and traditional leaders.

Through this activity, the participants became aware and understood the Mindanao Conflict and its History. They were able to understand SELF thru workshops and games. The meaning of conflict and how to respond to it was introduced and explained to them. How to build peace within selves and with others was also taught to them

The second phase was the training on Values Transformation and Deepening Culture of Peace (COP). It was conducted on December 22-24, 2011. The resource persons came from Bangsamoro



**Training on Culture of Peace (COP) and Values Transformation (VTT)**

Development Agency (BDA) since they are the expert on this topic. This activity was participated by 21 female and 25 male, with a total of 46 individuals. These participants were composed of BLGU, IDP Leaders, Sangguniang Kabataan Leaders, Women Sectors, PO leaders and Religious and traditional leaders.

### 3. Dialogues/Meetings for Conflict Resolution and Peace Sanctuary Formation

Series of dialogues and meetings to settle some conflicts and misunderstandings were done with the leaders and beneficiaries of the barangay. These activities were conducted on January 27, 2012; March 8, 2012; July 20, 2012; September 11, 2012; and November 14, 2012.

One of the important agenda discussed in a dialogue/meeting was the selection of location site. There was a conflict on where the location site would be and who would be the beneficiaries of the 35 units core shelter. The project staff identified Sitio Padian sa Isnin as the location site since majority of the IDPs who already returned reside there. It is also the center of the Barangay because most of the service infrastructures is located there, i.e. school, multi-purpose building, and women center. But the Barangay Chairman wanted that the location site will be at her relatives' residence, the Sitio Buligan. She was supported by H. Abdulmutalib Lagasan, the sitio leader of Sitio Buligan. But the Project Staff did not agree because the residents there have not yet returned. The group of the Barangay Chairman wanted also that they will select the beneficiaries based on their criteria which contradict to the criteria of ERRCM.



One of the series of dialogues and meetings conducted in Barangay Gawang

Prior to this dialogue, the MWDECC already talked with the MLGU through MPDC and presented the problem and got their support. MWDECC also talked to the influential leaders in the barangay and asked their help to settle the problem.

The project team presented the criteria of selecting the location site and beneficiaries. They said that the best site for the construction of core shelters should be the Sitio Padian sa Isnin since majority of the returned IDPs reside there. They also emphasized that the priority beneficiaries are those IDPs who

have already returned. Profiling of the beneficiaries was required.

Repair of shelters was another issue tackled since there was no house to be repaired because houses there were totally damaged and burned during 2008 armed conflict. There should be construction of another core shelters, but the beneficiaries did not accept the design presented by the project team because the roofing was made of nipa. They wanted that the roof should also be made of galvalume too. The MWDECC asked their counterpart especially for the labor cost because the budget was very small to construct the same structure. It was agreed that the structural parts of the units are made of coco lumber, bagumbong for walling, and galvalume for roofing with a dimension of 10x12 ft.

The hauling of construction materials was also discussed and it will be the counterpart of the community. They will be just provided with food for work. The leaders and beneficiaries committed to secure the construction materials and provided an area where to stock them. They set the schedule of every delivery of materials to make sure that those who will haul and transport were available.

The most challenging problem settled by MWDECC was the problem with the Barangay Chairman and some sitio leaders who were asking for their share from the project. They were comparing the ERRCM project with other interventions of other organizations in some communities who were giving percentage to the LGUs especially in the construction of core shelter units. They threatened the MWDECC that they will file a complaint with the office of the ARMM Governor.

The MWDECC held firm with their stand that will not give any single amount to the BLGU who were asking SOPs since it is against the policy of MWDECC and the ERRCM. This project is different from other projects in other areas. It was also agreed prior to the implementation of the project that the BLGU will give their counterpart instead.

For the last 2 dialogues and meetings, declaration of Peace Sanctuary was discussed. MWDECC met and consulted first the leadership of MILF and asked for their approval since there was a presence of their troops in the area. There were an average of 25 men and 15 women who are always attending meetings and dialogues.

#### **4. Training/Coaching on Peace-based Community Organizing and Advocacy**

The training and coaching on Peace-based Community Organizing and Advocacy was conducted on January 24-26, 2012. This activity was participated by 5 female and 15 male, with a total of 20 individuals. They were the leaders selected from the participants of COP trainings. These participants were composed of BLGU, IDP Leaders, PO leaders NASA leaders and BAWASA leaders.



**The organized Gawang Peace Watch (GPW) together with MWDECC Executive Director and Project Team**

The major outputs of this activity were the organization of Gawang Peace Watch (GPW) with a set of officers and drafting of Peace Campaign Plan. The GPW was composed of 20 officers and members from the four (4) sitios of Barangay Gawang

GPW already established linkages with Nonviolent Peaceforce (NP). NP provided them with trainings like Basic Human Rights, and Early Warning and Early Response (EWER). Training-workshop on Gender-based Violence was already scheduled for January 2013.

### III. BENEFICIARY STORIES

#### *“The Story of Bapa Urie”*

Mr. Alimudin Sandigan, 40 years old with six (6) children, was one of the hundreds of thousands IDPs who has been living in this municipality, particularly in Barangay Gawang where all of the houses were burnt. Alimudin, also known as “Bapa Urie,” was really affected by the conflict. More so, he and his family had nowhere to go.

Bapa Urie’s economic life was stable before the conflict. His income was quite enough to sustain the needs of his family. He could manage well to send his children to school. But because of the war, his kids had stopped schooling. His family had to live with his relatives who were staying in the peace zone area.

Bapa Urie pursued fishing while his wife used to sell in the market the fishes he caught as their means of survival in Peace Zone area. Their earnings could not even sustain their daily needs, so they had to rely on the relief assistance from the aid donors just to survive. That often happened when Bapa Urie could not go fishing due to the recurrence of unstable peace and order. Bapa Urie was almost hopeless of recovering from their difficult life, thinking that their sufferings would be endless.

In 2010, the IDPs were advised to return to their places of origin.

Bapa Uri went with the IDPs who returned home. While on his way along with his family, Bapa Urie had mixed feelings – he was happy that his family would finally return home, and put into end the sufferings he experienced with his family in the small, hot and uncomfortable evacuation camp, and he worried about how to start their lives anew in their place of origin where their house was burnt.

Aside from that, he was greatly traumatized and the image of the war continually haunted him.

Having no house to return anymore and no means to sustain the needs of his wife and children, Bapa Urie and his family continued to experience sufferings which were heavier than what they had in evacuation camp. They barely received food assistance from the local government, unlike in evacuation camp where many non-government organizations were extending both food and non-food items.

In 2011, MWDECC came in, bringing with them the “Early Recovery and Rehabilitation Project” for the IDPs transition from relief to rehabilitation.

Fortunately, Bapa Urie was one of those who were given house and a recipient of the livelihood component of the project. He luckily received Bangka and Fish Cages. Having skill in carpentry, he built himself his house, and received food assistance from World Food through the organization (MWDECC).

Bapa Urie has now successfully rebuilt his life and family, has owned a more comfortable house, regained his means of livelihood, and the ability to send his children to school again.

Bapa Urie was repeatedly expressing his thanks and gratitude to the groups who helped him stand up from the darkness of sufferings in the evacuation camps. He also deeply hopes that the Bangsamoro question will finally be resolved so that no war will again take place in his Barangay and displace them again and again. He does not want to experience again the

hardships brought to him and his family by the armed conflict; and never would he like them to happen again even in his imagination.

#### **IV. MAINSTREAMING AND SUSTAINABILITY**

Prior to the implementation of the project, the people of Barangay Gawang were close-minded in terms of accepting any intervention coming from outside their community. They treated any help from others as an anti-insurgency program and just a way of using them to avail funds. Their attitude was a result of their previous experiences with several agencies and organizations that went to their community and promised an intervention without fulfilling it. They also became passive and did not care about the interventions they received. Thus, MWDECC thought of strategies to change their mentality and ensure that the ERRCM project will be appreciated by the community and that sense of ownership will be established by the will of God. Below were the initiatives done by MWDECC:

##### **A. Providing a Holistic Approach**

1. Training on Values Transformation and Deepening Culture of Peace
2. Spiritual Trauma Healing
3. Conduct of Peace Symposium
4. Regular dialogues and meetings for conflict resolutions
5. Gender Sensitivity and Reproductive Health Training
6. Training on Culture of Peace and Conflict Management

##### **B. Systematizing Social Cohesion**

MWDECC established mechanisms to ensure a smooth and harmonious relationship among the people involved.

###### **For all Project Sites**

Declaration of the community as peace sanctuary and organization of peace core group (Gawang Peace Watch)

###### **For the Core Shelter Units**

- The beneficiaries were selected based on the criteria set.
- The future owners were involved in the hauling of materials and construction of the units together with the hired carpenters
- Facilitated the agreement of 10 years contract of occupancy with land owner

###### **For the Water Systems**

- Distribution of maintenance tools
- Assigned 1 technician each pump for the maintenance of the units
- Equal distribution of water system units to the clustered core shelters

###### **For the Health Center and Botika ng Barangay**

- Provided training on Primary Health Care
- Provided medicines and general merchandise
- Delivered the equipment provided by ERRCM for BHS
- Facilitated the provision of health worker

**For the School Facility**

- Provision of educational materials and audio visual equipment
- Seeking the commitment of DepED to open classes next year and provide teachers

**For Bio-Intensive Gardening (BIG)**

- Clustering of beneficiaries per sitio
- Beneficiaries were taught on seeds, organic fertilizers and pesticides production
- Recipients were coached on strategies and techniques of establishing gardens that will not be affected by flood

**For Quick Impact Projects**

Organization of People's Organization registered with DOLE.

## V. FINANCE

The total budget allocation for this project is Php5,686,800.00. A huge amount of the budget is allocated to Component 1 with a 56.89% budget line, followed by Component 2 with a 28.15% budget line, next is Component 3 with a budget line of 11.08% and the lowest is the Component 5 with 3.88%.

The budget was divided into four (4) tranches and the three (3) tranches were already released while the last tranche will be released upon completion of the implementation, as well as submission of completion report both physical and technical, and issuance of Certificate of Completion by ERRCM to MWDECC.

The total amount released as of reporting time is Php5,059,620.00. The major bulk of first tranche was spent for the construction of core shelter units, repair of shelter, dialogues and meetings and conduct of training on COP. Core shelters construction was done first so that the beneficiaries can already return before implementing the other components. Training on COP was also conducted so that MWDECC can identify potential individuals and leaders who can assist in the implementation of the project and settlement of conflicts and problems that may arise during the implementation process.

The second tranche was consumed to continue the construction of core shelters, repair of shelters, installation of Level 1 water systems, dialogues and meetings, establishment of BnB, and conduct of trainings.

And major bulk of the third tranche was spent for the construction of BHS, renovation of School Facility, Provision of QIP both men and women, Bio-intensive gardening (BIG) and installation of level 2 water system.

Most of the counterparts were spent for the labour in the construction of core shelter units including repair of shelters, hauling of materials, earth filling for BHS, and monitoring and supervision of the project. There was minimal counterpart from BLGU; instead, the MILF local leaders and commander, and of course the residents provided their own counterparts.

## VI. RECOMMENDATIONS AND LESSONS LEARNED

REFLECTIONS	LESSONS LEARNED	RECOMMENDATIONS
Incorrect identification of intervention may cause misunderstanding and conflicts among the beneficiaries.	Identification of right intervention is very important so that problems and conflicts will not arise.	Gathering of baseline data of the target communities prior to the conceptualization of an intervention or project is essential to guarantee that right intervention will be implemented
Identification of right leaders to be approached during coordination is very important in implementing a certain project	Political leaders (elected) should not be the only group who should be considered in coordination, but most important are the informal leaders who have the influence and control in the community.	Be familiar with the dynamics in the barangay to know the approach to be taken and which group has the influence and control over the community. Is it the BLGU, MNLF, or MILF?
In implementing a certain project, the most important group that should be considered are the beneficiaries themselves.	Project to be implemented should be community driven to ensure that it will be smoothly and successfully implemented.	Political leaders' inappropriate attitude (asking for SOPs) should not be tolerated.
A sense of ownership of the residents and leaders of a community over a certain project is important to ensure sustainability.	A lot of issues inevitably come up if the residents and leaders of the community do not have a sense of ownership over the project	Coordinate with the leadership in the local government units including the informal and community leaders  Involve them in all levels of project planning and implementation.  Conduct regular dialogues and consultations with the community and leaders to provide a place for feedbacks and suggestions.
A community is like a family, if their parents are not around, the children will quarrel and conflicts will arise.	Skills in conflict management and resolution helped the organization to effectively manage the conflicts that arose from the start of the implementation to the completion of the project.	Settle sources of conflicts immediately. Patience, determination, and understanding must be observed all the time. Keep in mind that the people served came from depression and trauma and that they can be very emotionally sensitive.  Continuous dialogues and meetings to discuss issues and concerns should be done.
Personal interests of some political leaders exist as a result of poor governance to the extent that they will manipulate the list of beneficiaries.	The MWDECC project team did not rely on listings provided by some of the leaders. Validation and profiling of beneficiaries were done.	Validation and actual profiling of beneficiaries is important to ensure that the interventions will reach the target beneficiaries.

## VII. TURN-OVER CEREMONY

Despite of difficulties, hindrances and problems encountered, finally MWDECC survived and completed the project and formally turned-over to the concerned LGUs and agencies. On December 10, 2012, the Mass Turn-over Ceremony was conducted together with four (4) other NGOs due to lack of time. The ceremony was attended by the OIC Mayor of Datu Saudi Ampatuan Hon. Atty. Jehan L. Ampatuan, Regional Project Director Prof. Edgardo Ramirez, ERRCM ARMM Desk Project Coordinator Suharto Abas, ARMM DepED District Supervisor Mr. Abdunnasser Kempao, security sectors both AFP and PNP, Tasked Force Ittihad, and representatives from IPHO and LGUs.

Following are some of the pictures taken during the Mass Turn-over Ceremony:



# Annexes